



I live in Broken Hill

Preschool - Module 1

Module overview

This lesson gives children the opportunity to explore what makes Broken Hill such a special town. They will identify Broken Hill as a mining town, and as a result lead has gotten into the air and spread in and around special places around the town. Children will learn that lead does not belong in the human body and can make us sick.

Aims and objectives

- Broaden their understanding of the world in which they live
- Express an opinion on a matter that affects them
- Demonstrate a sense of comfort and belonging in their environment
- Use play to investigate, project and explore new ideas
- Participate with others to solve problems and contribute to group outcomes
- Show growing appreciation and care for natural and constructed environments
- Develop an awareness of the impact of human activity on environments and the interdependence of living things
- Express wonder and interest in their environments
- Are curious and enthusiastic participants in their learning
- Explore their environments

Differentiation

As with all of the LeadSmart Education modules, we encourage you to differentiate the following activities by making any necessary modifications in order to cater for diverse student learning needs.

Note: The suggested duration of the activities found within this module may require adjustment to cater for the needs of your students.

Resources

- Photograph 1: Picture of your preschool printed on A4 paper
- Photograph 2: Picture of Sturt Park printed on A4 paper
- Photograph 3: Picture of the Line of Lode printed on A4 paper
- Photograph 4: Picture of Lead Ted Jnr, Jack and Dusty from page 3 printed on A4
- Preschool activity booklets
- Lead and coloured pencils
- Image of Lead Ted Jnr
- Materials for sensory play: Container, rice, magnets (3 colours for each metal), and magnetic wand
- Materials for manipulative play: Lego blocks
- Materials for creative play: Paint smocks/apron, paint brushes, paints, and art paper
- Materials for dramatic play: Mining props such as trucks, torch, and dress up costumes

EYLF learning outcomes

Outcome 2: Children are connected with and contribute to their world

- 2.1 Children develop a sense of belonging to groups and communities and an understanding of the reciprocal rights and responsibilities necessary for active community participation
- 2.4 Children become socially responsible and show respect for the environment

Outcome 4: Children are confident and involved learners

- 4.1 Children develop dispositions for learning such as curiosity, cooperation, confidence creativity, commitment, enthusiasm, persistence, imagination and reflexivity.

Outcome 5: Children are effective communicators

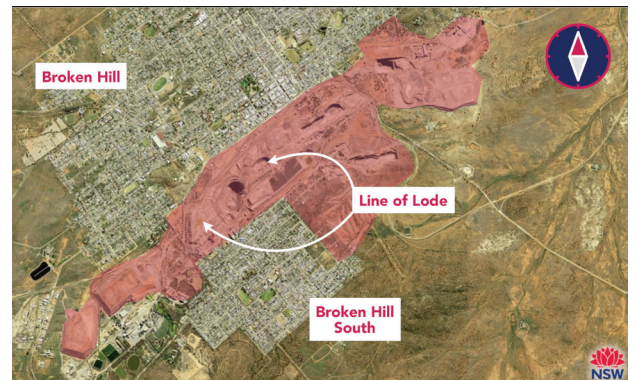
- 5.1 Children interact verbally and non-verbally with others for a range of purposes

Introductory phase

10 minutes

We recommend keeping a record of the children's participation in and understanding of the activities and discussions in this lesson with a floor book or log book. This can be used to record children's voices, reactions and preferences throughout the session as well as any continuous learning opportunities and can be used as a wall display to start off your project when combined with photos taken throughout the day.

1. Ask the children if anyone can name the town in which they live (Broken Hill).
2. Explain that in this activity they will be exploring why Broken Hill is such a special place to live.
3. Gather children together to sit in a large circle.
4. Explain to them that you are going to share images of some special places which they may recognise.
 - Show the children photograph 1 and ask if anyone can recognise it.
 - Explain that this is a photograph of our preschool, this is a special place where you come to learn.
5. Show the children photograph 2 and ask if anyone can recognise it.
 - Explain that this is a photograph of Sturt Park, this is a special place where you can go to play.
6. Show the children photograph 3 and ask if anyone can recognise it.
 - Explain that this is a photograph of the Line of Lode, a special place in Broken Hill where miners have been mining (digging up) a special metal called lead for over 130 years!
 - Explain that mining and mines are very important and special places in Broken Hill they are places where a lot of people work.



Supporting activities

Set up a range of areas both inside and outside with provocations for children to explore this topic, as well as areas that correspond to children's current and ongoing interests. We suggest the following areas:

Cognitive and Physical development - A writing table for the activity book, where an adult invites children to complete the activities or explore text and paper media through drawing and writing and interacting with writing equipment. These activity books may need to be stored for children to revisit later or available to take home.

Sensory development - Provide children with a sensory magnet mining area using a container, magnetic wand, coloured magnets, and rice. Fill the container with rice then hide the magnets in the rice. Challenge children to see if they can 'mine' the lead using the magnetic wand. Sensory activities are interesting and provide children with an opportunity to explore and investigate using their senses.

Physical development – Provide lego blocks and a range of photos taken around the town to construct the town of Broken Hill. Challenge the Children to name different buildings and areas.

Creative development – provide paints and a range of photos taken around the town for children to paint pictures of Broken Hill. You may wish to limit the colour palette to more closely represent the Broken Hill area, for example, red, oranges, blacks and browns.

Dramatic development – Provide a range of props for children to role play mining in Broken Hill. Encourage them to think about what miners might do during the day. Props may include toy trucks, builders' helmets, high vis vests and spades.



Closing phase

5 minutes

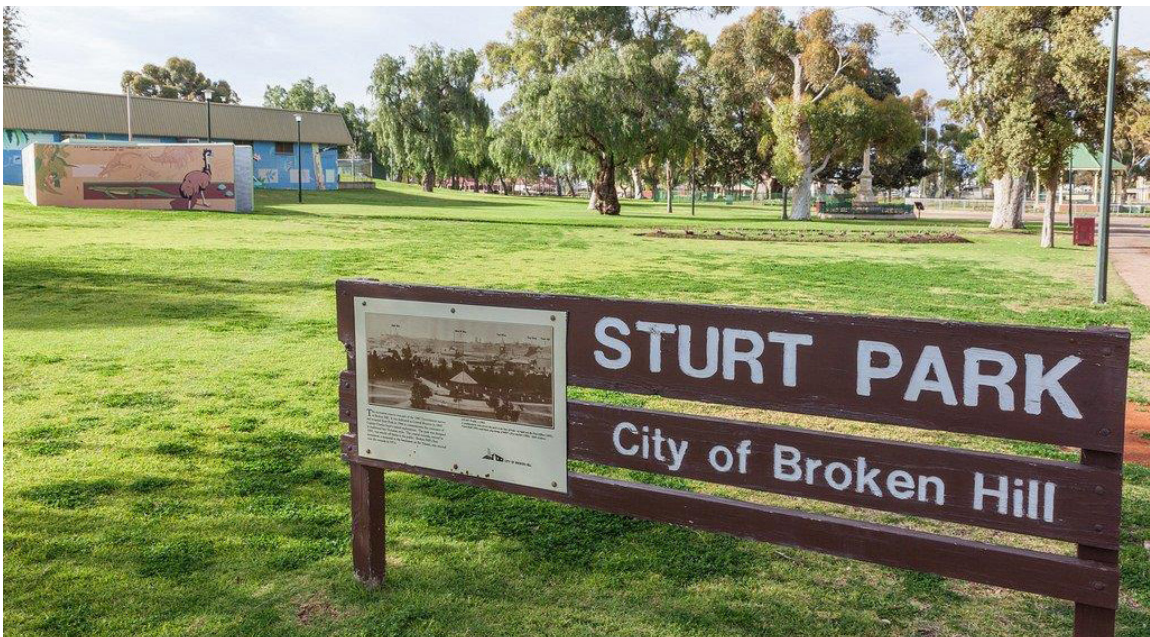
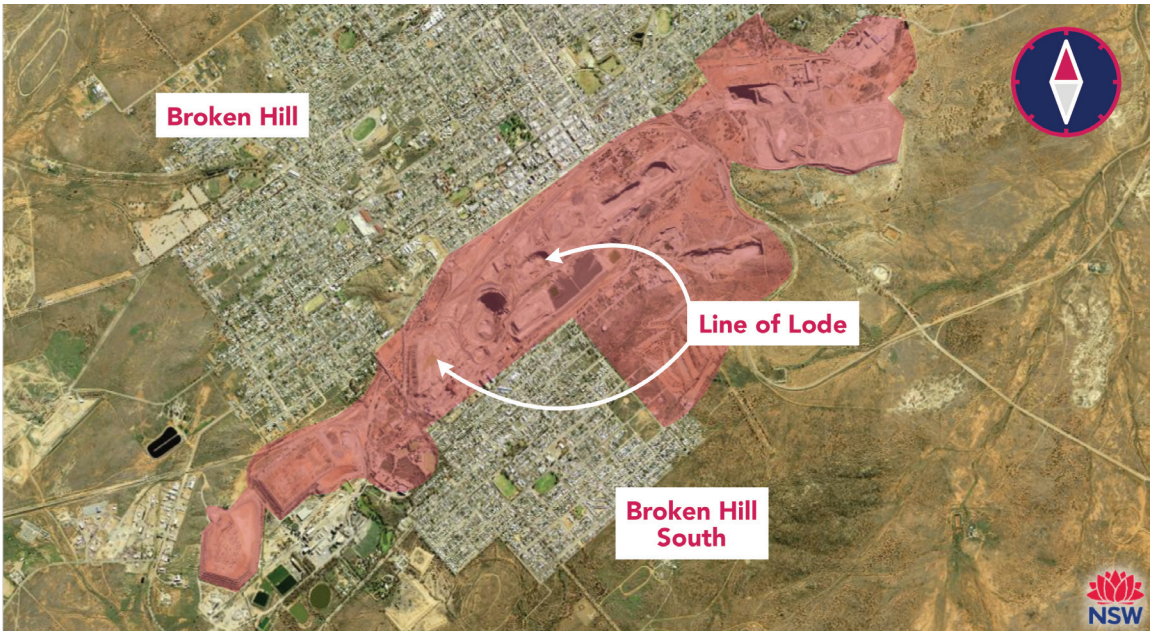
1. Bring the children back together and discuss why Broken Hill is such a special place.
2. Discuss some of the children's favourite places in Broken Hill. Encourage them to say why they like that place.
3. Ask if anyone can remember what mining is and what is mined in Broken Hill. Establish that lead is mined in Broken Hill.
4. Explain that even though lead is very special, it does not belong in our bodies and can make us quite sick!
5. Show the children a picture of Lead Ted Jnr and explain that Lead Ted Jnr loves living in Broken Hill and will be helping us to learn more about our town, where we can find lead and how we can be LeadSmart and protect ourselves from lead harm so we can keep our bodies healthy and strong.

Questions for sustained shared thinking

Prompts for shared conversations, which can be extended or developed:

- I wonder what makes Broken Hill such a special place to live? What do you think?
- How many special places can you think of in Broken Hill?
- Do you know anyone who works in the mines?
- Why do you think people mine in Broken Hill?
- How do you think miners get the lead out of the ground?





Broken Hill City Council

I live in Broken Hill

Draw a picture in each of the boxes below.



My preschool

Line of Lode

Hi, I'm Lead Ted Jnr.
I help protect
people from lead in
Broken Hill.

